

SECTION 4 CHARTS AND DIAGRAMS

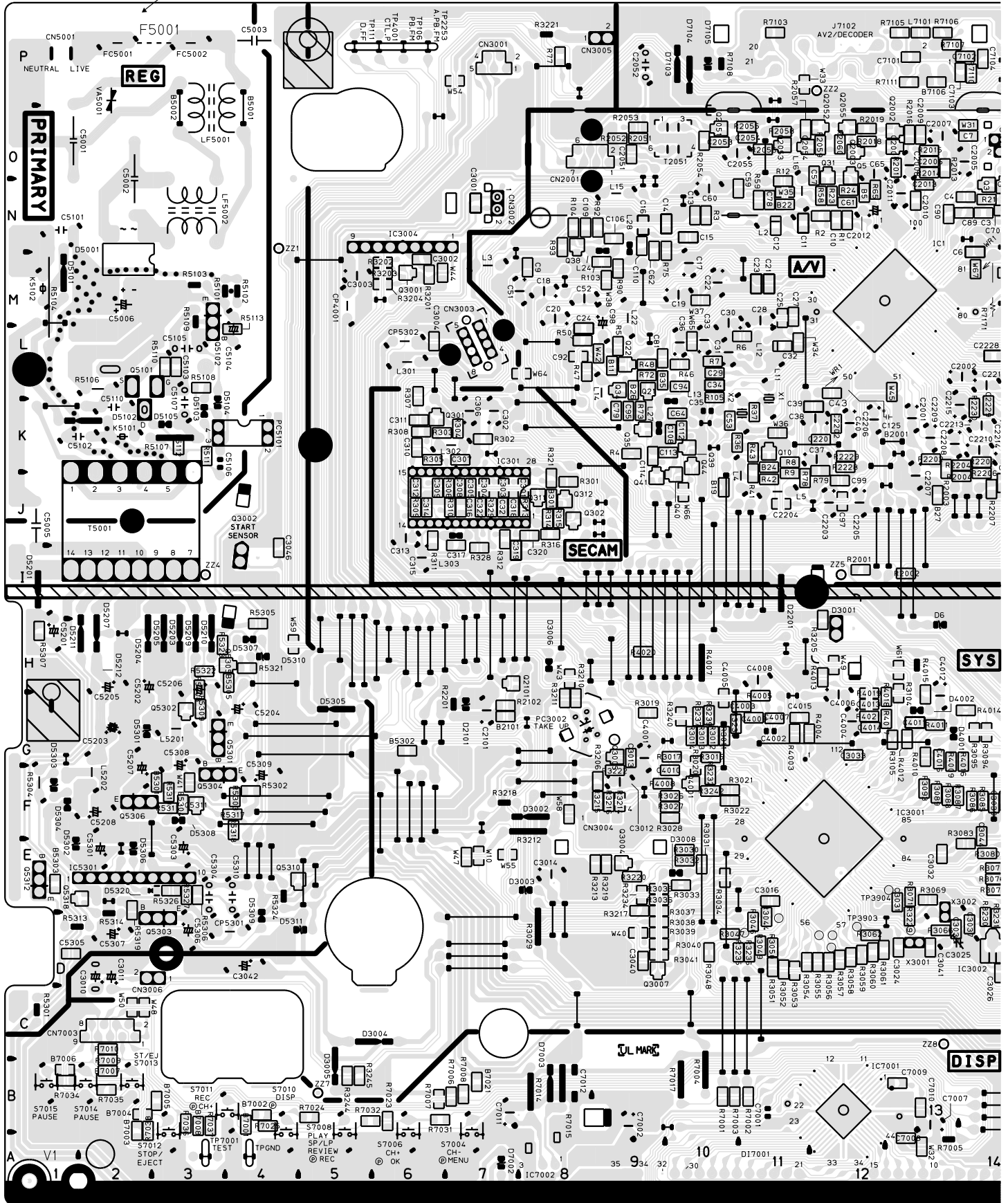
COMPONENT PARTS LOCATION GUIDE <MAIN> [HR-J377EM]

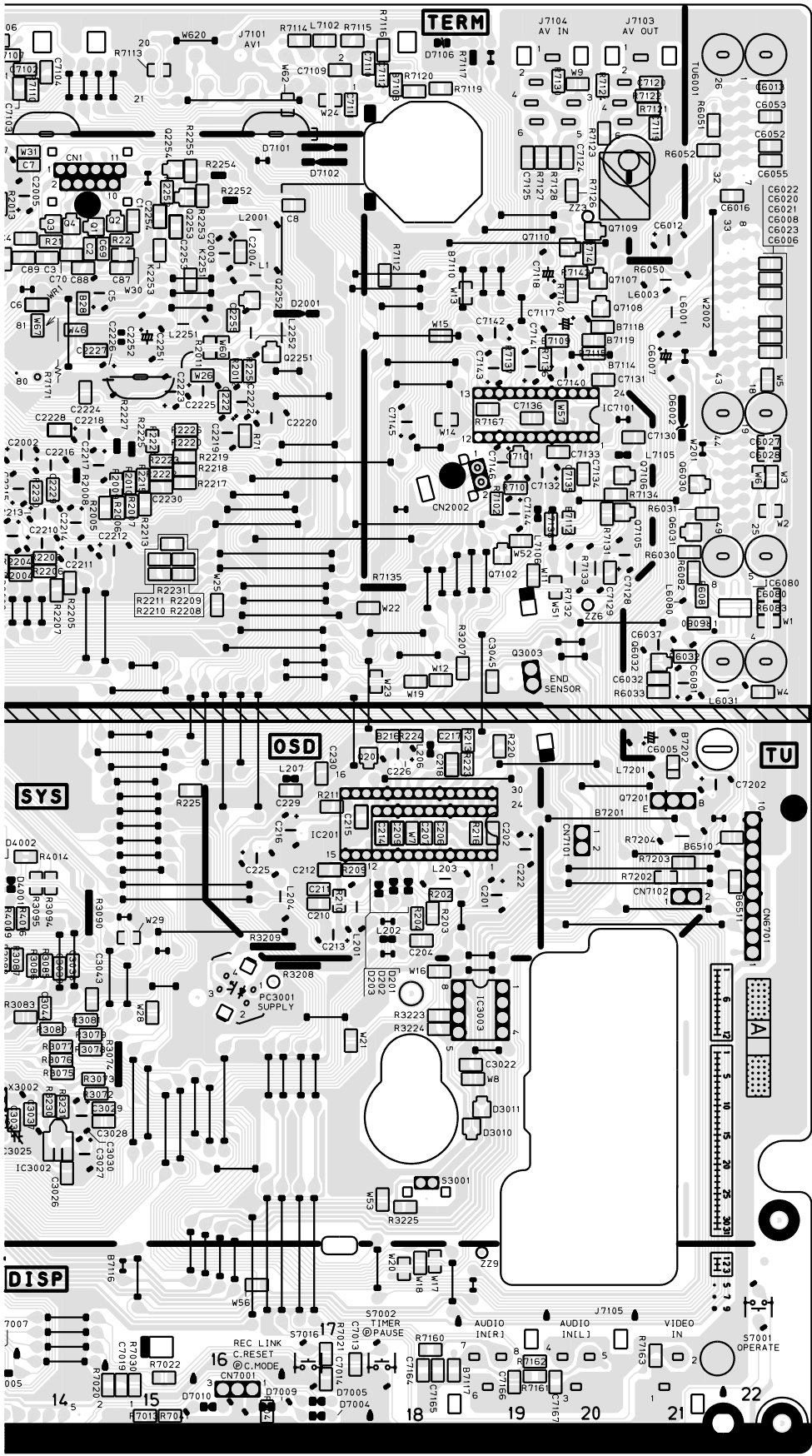
REF. NO.	LOCATION	REF. NO.	LOCATION	REF. NO.	LOCATION	REF. NO.	LOCATION	REF. NO.	LOCATION	REF. NO.	LOCATION	REF. NO.	LOCATION	REF. NO.	LOCATION	REF. NO.	LOCATION																			
CAPACITOR																																				
C1	B	C	15N	C314	A	D	6J	C4012	A	D	13H	CN3001	A	D	7P	L28	A	D	9M	R37	B	C	11K	R2227	A	D	15L	R3232	B	C	10F	R7103	B	C	11P	
C2	B	C	14N	C315	A	D	6J	C4013	A	D	12G	CN3002	A	D	7N	L201	A	D	17G	R41	B	C	11J	R2228	B	C	12K	R3234	B	C	9E	R7105	B	C	13P	
C3	B	C	14N	C316	A	B	C	7J	C4015	B	C	11G	CN3004	A	D	9F	L203	A	D	19G	R43	B	C	11K	R2230	B	C	14K	R3236	B	C	11D	R7107	B	C	13P
C4	B	C	14N	C317	A	B	C	7J	C4016	B	C	13G	CN3005	A	D	9F	L204	A	D	16G	R46	B	C	10L	R2231	B	C	15K	R3237	B	C	10G	R7108	A	D	10P
C5	A	D	14N	C318	A	D	7J	C5001	A	D	10	CN3006	A	D	3D	L206	A	D	18I	R47	B	C	8L	R2251	A	D	16M	R3238	B	C	10G	R7110	B	C	14P	
C6	B	C	14N	C319	B	C	7J	C5002	A	D	2N	CN5001	A	D	1P	L207	A	D	17H	R48	B	C	9L	R2252	A	D	16O	R3239	B	C	10G	R7111	B	C	13P	
C7	B	C	14O	C320	B	C	8J	C5003	A	D	4P	CN6701	A	D	22F	L301	A	D	6L	R50	B	C	8L	R2253	B	C	16O	R3240	B	C	10G	R7112	B	C	18N	
C8	B	C	17O	C321	B	C	7J	C5005	A	D	1J	CN7001	A	D	16A	L302	A	D	6K	R58	B	C	12N	R2254	A	D	16O	R3242	B	C	10G	R7113	B	C	15P	
C9	B	C	8M	C322	B	C	7J	C5006	A	D	2M	CN7003	A	D	2C	L303	A	D	6J	R59	B	C	11N	R2255	B	C	15O	R3244	B	C	5B	R7114	B	C	17P	
C10	B	C	12N	C2001	A	D	13K	C5101	A	D	1N	CN7101	A	D	20H	L2001	A	D	16N	R65	B	C	12N	R3011	B	C	10G	R3245	B	C	5B	R7115	B	C	17P	
C11	B	C	11N	C2002	A	D	13L	C5102	A	D	1K	CN7102	A	D	21G	L2251	A	D	16M	R71	B	C	16L	R3012	B	C	10G	R4001	A	D	13H	R7116	B	C	18P	
C12	B	C	11N	C2003	A	D	16N	C5103	B	C	3L	DIODE				L2252	A	D	16M	R72	B	C	9L	R3013	B	C	10G	R4003	B	C	11G	R7117	A	D	19P	
C13	B	C	10N	C2004	A	D	16N	C5104	A	D	4M	D6	A	D	13H	L5201	A	D	3G	R73	B	C	9K	R3014	B	C	10G	R4004	B	C	11G	R7119	B	C	18P	
C14	B	C	10N	C2005	A	D	14O	C5105	A	D	3L	D201	A	D	18G	L5202	A	D	2G	R75	B	C	10N	R3015	B	C	10G	R4005	B	C	11G	R7120	B	C	18P	
C15	B	C	10N	C2006	A	D	13O	C5106	A	D	3J	D202	A	D	18G	L6001	A	D	21M	R77	B	C	8P	R3017	B	C	10G	R4007	A	D	10H	R7121	B	C	21P	
C16	B	C	9N	C2007	A	D	13O	C5107	A	D	3K	D203	A	D	18G	L6003	A	D	21N	R78	B	C	11J	R3019	B	C	9G	R4008	B	C	9F	R7122	B	C	21P	
C17	A	D	10M	C2008	A	D	13O	C5110	A	D	2K	D2001	A	D	16M	L6031	A	D	21I	R79	B	C	12K	R3020	B	C	10G	R4009	B	C	13G	R7123	B	C	20O	
C18	A	D	8M	C2009	B	C	13O	C5201	A	D	1I	D2101	A	D	7H	L6080	A	D	13P	R90	B	C	9M	R3021	B	C	10F	R4010	B	C	13G	R7124	B	C	20O	
C19	A	D	10M	C2010	A	D	13N	C5202	A	D	2H	D2201	A	D	11I	L7101	B	C	9N	R92	B	C	9N	R3022	B	C	10F	R4011	B	C	13G	R7126	B	C	20O	
C20	A	D	8M	C2011	A	D	13N	C5203	A	D	2G	D3001	A	D	12H	L7102	B	C	8N	R93	B	C	8N	R3026	B	C	10F	R4012	B	C	13G	R7127	B	C	19O	
C21	B	C	11M	C2012	A	D	12N	C5204	A	D	4G	D3002	A	D	8F	L7105	A	D	21L	R103	B	C	9M	R3027	B	C	10F	R4013	B	C	12G	R7128	B	C	20O	
C22	A	D	10M	C2013	B	C	13N	C5205	A	D	2H	D3003	A	D	8E	L7106	A	D	19K	R104	B	C	8N	R3028	B	C	10F	R4014	B	C	14G	R7130	B	C	20K	
C23	B	C	11M	C2051	B	C	9O	C5206	A	D	3H	D3004	A	D	5C	L7201	A	D	21H	R105	B	C	10L	R3029	A	D	8D	R4015	B	C	14G	R7131	B	C	20P	
C24	B	C	8L	C2052	A	D	9P	C5207	A	D	2F	D3005	A	D	5C	TRANSISTOR				R202	B	C	18G	R3030	B	C	10E	R4016	B	C	14G	R7132	A	D	20J	
C25	B	C	11M	C2053	A	D	10O	C5208	A	D	2F	D3006	A	D	8H	Q1	B	C	14N	R203	B	C	18G	R3031	B	C	10E	R4017	B	C	13G	R7133	A	D	20J	
C27	B	C	11M	C2054	A	D	11O	C5301	A	D	2E	D3008	A	D	10E	Q2	B	C	15N	R204	B	C	18G	R3032	B	C	10E	R4018	B	C	13G	R7134	A	D	20J	
C28	A	D	11M	C2055	A	D	11O	C5303	A	D	3E	D3010	B	C	19D	Q3	B	C	14N	R209	B	C	17G	R3033	B	C	10E	R4019	B	C	12G	R7135	A	D	18K	
C29	A	D	10L	C2101	A	D	7G	C5304	A	D	3E	D3011	B	C	19D	Q4	B	C	14N	R210	B	C	17G	R3034	B	C	10E	R4020	B	C	9H	R7136	B	C	19M	
C30	A	D	10M	C2201	B	C	12K	C5305	B	C	1D	D3010	A	D	13G	Q5	B	C	12O	R211	B	C	17H	R3035	B	C	9E	R4021	B	C	12G	R7137	B	C	19M	
C31	A	D	10L	C2202	A	D	12K	C5306	A	D	3D	D4001	A	D	13G	Q10	B	C	11K	R212	B	C	19I	R3036	B	C	9E	R5101	A	D	4M	R7140	B	C	20N	
C32	A	D	11L	C2203	A	D	12J	C5307	A	D	3D	D4002	A	D	13G	Q10	B	C	11K	R216	B	C	19H	R3037	B	C	9E	R5102	A	D	4M	R7141	B	C	20N	
C33	A	D	10L	C2204	B	C	11J	C5308	A	D	3G	D5001	A	D	2M	Q21	B	C	9L	R220	B	C	19I	R3038	B	C	9D	R5103	A	D	3M	R7142	B	C	20N	
C34	B	C	10K	C2205	A	D	12J	C5309	A	D	4F	D5101	A	D	1M	Q22	B	C	9L	R223	B	C	19H	R3039	B	C	9D	R5104	A	D	1N	R7146	B	C	18B	
C35	A	D	10K	C2206	A	D	12K	C5310	A	D	4E	D5102	A	D	2K	Q31	B	C	12O	R224	B	C	18I	R3040	B	C	9D	R5106	A	D	2L	R7161	B	C	19A	
C36	A	D	10K	C2207	A	D	13K	C6005	A	D	2I	D5103	A	D	3K	Q34	B	C	9L	R225	B	C	15H	R3041	B	C	9D	R5107	A	D	3K	R7162	B	C	19B	
C37	A	D	11K	C2208	A	D	13K	C6006	B	C	22M	D5104	A	D	3L	Q35	B	C	9K	R301	B	C	8J	R3044	B	C	11D	R5108	A	D	3L	R7163	B	C	21B	
C38	A	D	12K	C2209	A	D	13K	C6007	A	D	21M	D5105	A	D	3K	Q38	B	C	8N	R302	B	C	7K	R3046	B	C	11D	R5109	A	D	3L	R7167	B	C	19L	
C39	B	C	12K	C2210	A	D	14K	C6008	B	C	22M	D5201	A	D	1I	Q39	B	C	10K	R303	B	C	6K	R3047	B	C	10D	R5110	B	C	3L	R7171	A	D	14M	
C40	A	D	12K	C2211	A	D	14K	C6012	A	D	21N	D5203	A	D	3I	Q40	B	C	10J	R303	B	C	7K	R3048	B	C	10D	R5111	B	C	3K	R7202	B	C	21G	
C43	A	D	12L	C2212	A	D	15K	C6013	B	C	22P	D5204	A	D	2I	Q41	B	C	9J	R304	B	C	6K	R3049	B	C	11D	R5112	B	C	3K	R7203	B	C	21G	
C51	A	D	8M	C2213	A	D	14K	C6016	B	C	22O	D5204	A	D	2I	Q41	B	C	9J	R305	B	C	7J	R3050	B	C	11D	R5113	B	C	4L	R7204	A	D	21G	
C52	A	D	8M	C2214	A	D	14K	C6020	B	C	22N	D5207	A	D	2I	Q201	B	C	17H	R306	B	C	6L	R3051	B	C	11D	R5301	A	D	1C	SWITCH				
C53	B	C	10K	C2215	A	D	14K	C6021	B	C	22N	D5210	A	D	3I	Q302	B	C	8J	R308	B	C	6K	R3052	B	C	11D	R5302	B	C	4F	S3001	A	D	18C	
C57	B	C	12O	C2216	A	D	14L	C6022	B	C	22N	D5211	A	D	2H	Q311	B	C	8J	R309	B	C	6J	R3053	B	C	11D	R5303	B	C	4F	S7001	A	D	22B	
C59	B	C	11N	C2217	A	D	14L	C6023	B	C	22M	D5212	A	D	2I	Q312	B	C	8J	R310	B	C	7J	R3054	B	C	11D	R5304	A	D	1H	S7002	A	D	18B	
C60	A	D	10N	C2218	A	D	14L	C6027	B	C	22L	D5301	A	D	2G	Q2001	B	C	13O	R311	B	C	6J	R3055	B	C	12D	R5305	B	C	4F	S7004	A	D	7B	
C61	B	C	12N	C2219	A	D	16L	C6028	B	C	22L	D5302	A	D	1F	Q2002	B	C	13O	R312	B	C	7J	R3056	B	C	12D	R5306	B	C	3E	S7006	A	D	6B	
C62	B	C	9N	C2220	A	D	16L	C6032	B	C	21I	D5303	A	D	1F	Q2003	B	C	12O	R313	B	C	8J	R3057	B	C	12D	R5307	B	C	1H	S7008	A	D	5B	
C64	B	C	10K	C2221	A	D	16L	C6037	B	C	21J	D5304	A	D	1F	Q2005	B	C	10O	R314	B	C	8J	R3058	B	C	12D	R5308	B	C	3G	S7010	A	D	4B	
C65	A	D	12O	C2222	A	D	16L	C6052	B	C	22O	D5305	A	D	5G	Q2052	B	C	12O	R316	B	C	8J	R3059	B	C	12D	R5309	B	C	3F	S7011	A	D	4B	
C69	B																																			

4.1 MAIN, A/C HEAD, MINI OPE, LITHIUM BATTERY AND LOADING MOTOR CIRCUIT BOARDS [HR-J377EM]

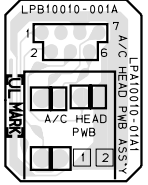
<03>MAIN
LPB10086-002E

DANGEROUS VOLTAGE

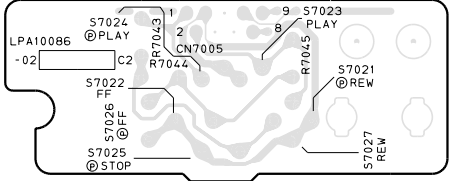




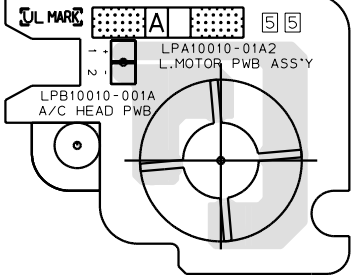
<12> A/C HEAD
LPB10010-001A



<28> MINI OPE
LPB10086-002E



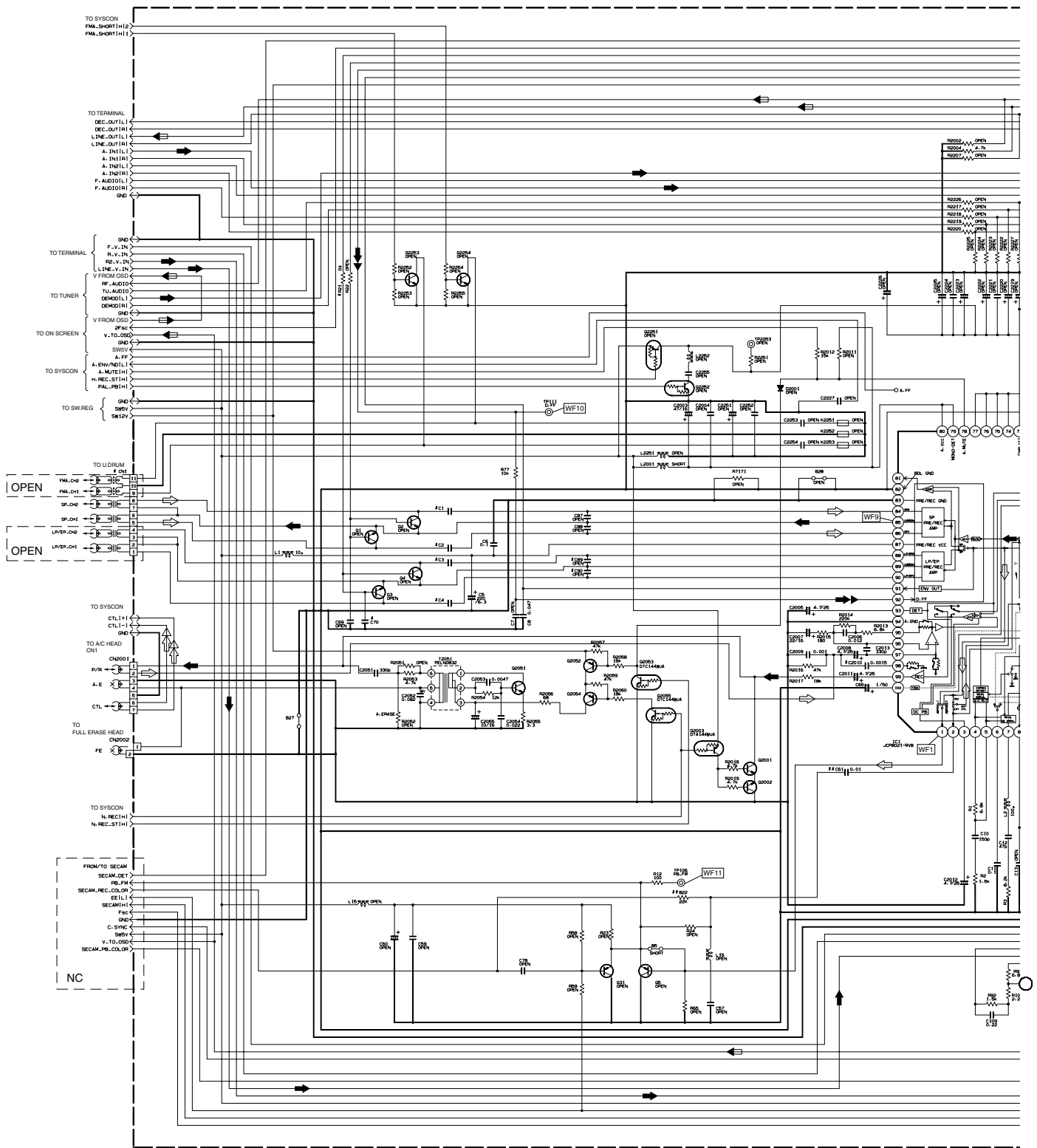
<55> LOADING MOTOR
LPB10010-001A



<93> LITHIUM BATTERY
LPB10086-002E



4.2 VIDEO/N.AUDIO SCHEMATIC DIAGRAM [HR-J377MS]



Note : For VIDEO/N.AUDIO waveforms, please refer to page 4-35.

DIFFERENCE TABLE AUDIO

MODEL	SYMBOL	R0001	R0002	R0003	R0004	R0005	R0006	R0007
WITH CH	WITH IN	X	O	X	X	X	X	30k
W/O CH	WITH IN	O	O	O	O	O	O	30k
W/O CH	W/O PERI	O	X	O	X	O	X	30k (OPEN)

SYMBOL	C0010
WITH LP MODE	O
W/O LP MODE	X

		C20	C51	C18	C52
WITH CH	WITH IN	NONPOLAR	O	X	X
W/O CH	WITH IN	NONPOLAR	X	X	X
WITH CH	WITH PERI	NONPOLAR	O	O	O
W/O CH	WITH PERI	NONPOLAR	O	X	O
WITH CH	W/O PERI	NONPOLAR	X	O	O
W/O CH	W/O PERI	NONPOLAR	X	X	O

VIDEO

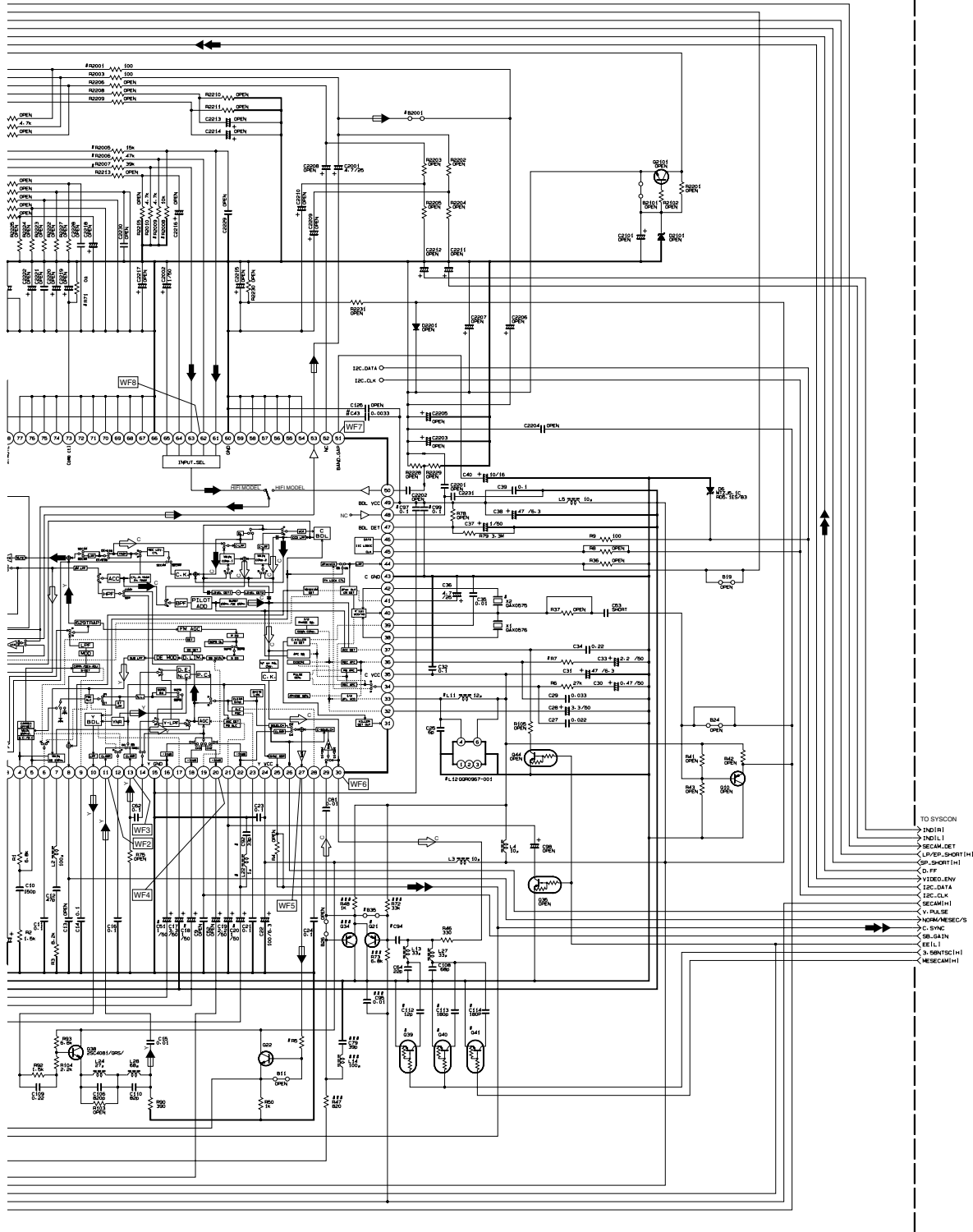
		## SYMBOLS	# SYMBOLS	B35	Q21	Q34
WITH CH	WITH IN	O	X	X	O	0-01
W/O CH	WITH IN	X	X	O	X	SHORT
WITH CH	WITH PERI	O	O	X	O	0-01
W/O CH	WITH PERI	X	X	O	X	SHORT

		R71	C1	C3	C89	C90	C91	PC
WITH CH	WITH IN	O	0-01	X	SHORT	5-B	X	
W/O CH	WITH IN	X	0-1	0-1	X	1-B	SH	

		L11	L12	C92	L92	R6	C43	C93
WITH CH	WITH IN	X	O	X	220	O		
W/O CH	WITH IN	O	X	X	SHORT	X		

Note : The Parts Number, value and rated voltage etc. in the Schematic Diagram are for references only.
When replacing the parts, refer to the Parts List.

03 MAIN (VIDEO/N.AUDIO)



- TO SYSTEM
- > INDI
- < INDI
- > BECAM_DET
- < UNDER_SHORT_HI
- > SP_SHORT_HI
- < D_FF
- > VIDEO_ENV
- < I2C_DATA
- > I2C_CLK
- < BECAM_HI
- > V_PULSE
- < V_BKWD/REC/S
- > C_SYNC
- < BECAM_IN
- > BECAM_HI
- < BECAM_HI

p10259001a_rev1

C90	CNI	R76			R7
SHORT	5-B	X	YES	○	680 (820)
X	1-B	SHORT	NO	X	820

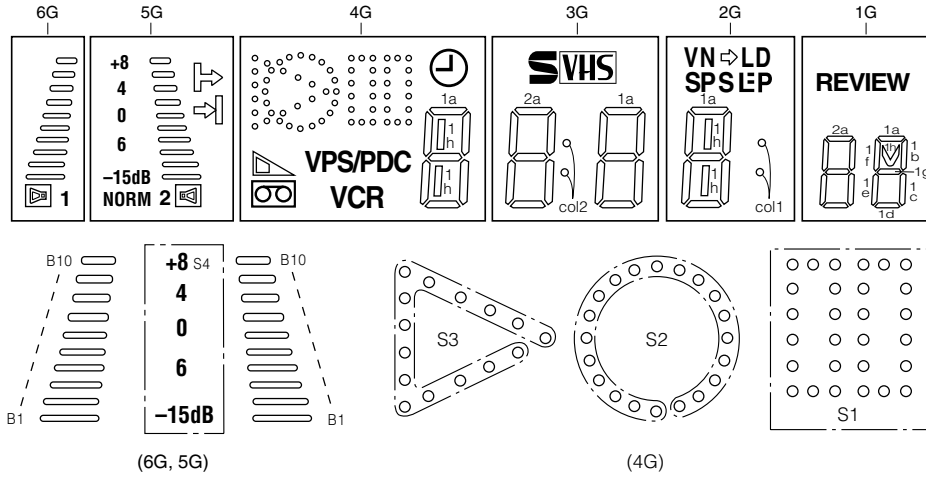
R7	R6	C43	C114
<	220	○	○
<	SHORT	X	X

NOTES-UNLESS OTHERWISE SPECIFIED.
 ALL NPN TRANSISTOR ARE 2SC4081/G/S/ or 2SD1819A/G/S/ or 2PC4081/R/.
 ALL PNP TRANSISTOR ARE 2SA1576A/G/R/ or 2SB1218A/G/R/ or 2PA1576/R/.
 ALL NPN DIGITAL TRANSISTOR ARE DTC144NU or UN62IE or PDC144NU or RN1309.
 ALL RESISTANCE VALUES ARE IN OHMS.
 ALL INDUCTANCE VALUES ARE IN H.
 ALL CAPACITANCE VALUES ARE IN μF.

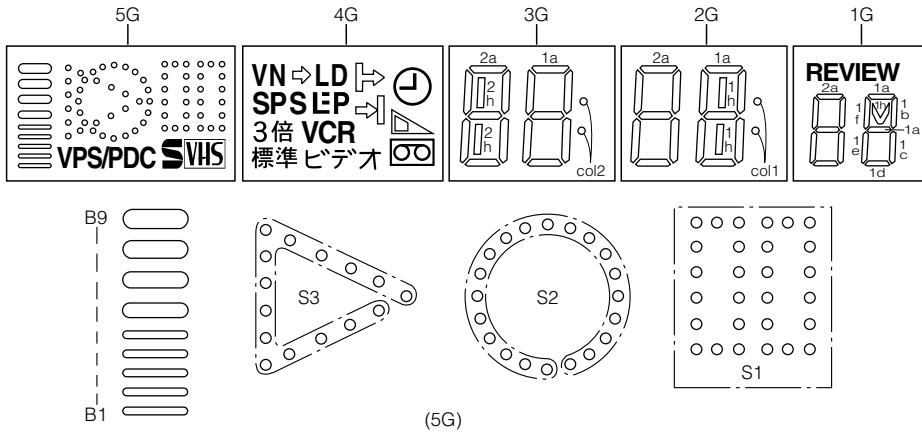
+ ELECTROLYTIC
 CERAMIC
 MYLOR
 NON POLAR

4.3 FDP GRID ASSIGNMENT AND CONNECTION [HR-J377EM]

[A] (FDP with audio level indicator)



[B] (FDP without audio level indicator)



ANODE CONNECTION

[A]

	6G	5G	4G	3G	2G	1G
P 1	—	⇌	S2	1a	1a	1a
P 2	—	⇌	S1	1b	1b	1b
P 3	—	S4	S3	1f	1f	1f
P 4	—	NORM	VPS/PDC	1g	1g	1g
P 5	1	2	⊙	1c	1c	1c
P 6	▣	▣	▣	1e	1e	1e
P 7	B10	B10	⊙	1d	1d	1d
P 8	B9	B9	VCR	col2	1h	1h
P 9	B8	B8	1a	2a	col1	2a
P10	B7	B7	1b	2b	⇌	2b
P11	B6	B6	1f	2f	VN	2f
P12	B5	B5	1g	2g	LD	2g
P13	B4	B4	1c	2c	SP	2c
P14	B3	B3	1e	2e	S _(SEP)	2e
P15	B2	B2	1d	2d	⋮ _(SEP)	2d
P16	B1	B1	1h	SVHS	LP _(SEP)	REVIEW

ANODE CONNECTION

[B]

	5G	4G	3G	2G	1G
P 1	S2	⇌	1a	1a	1a
P 2	S1	⇌	1b	1b	1b
P 3	S3	3倍	1f	1f	1f
P 4	VPS/PDC	標準	1g	1g	1g
P 5	SVHS	⊙	1c	1c	1c
P 6	—	▣	1e	1e	1e
P 7	—	⊙	1d	1d	1d
P 8	B9	VCR	col2	1h	1h
P 9	B8	ビデオ	2a	2a	2a
P10	B7	⇌	2b	2b	2b
P11	B6	VN	2f	2f	2f
P12	B5	LD	2g	2g	2g
P13	B4	SP	2c	2c	2c
P14	B3	S _(SEP)	2e	2e	2e
P15	B2	⋮ _(SEP)	2d	2d	2d
P16	B1	LP _(SEP)	2h	col1	REVIEW